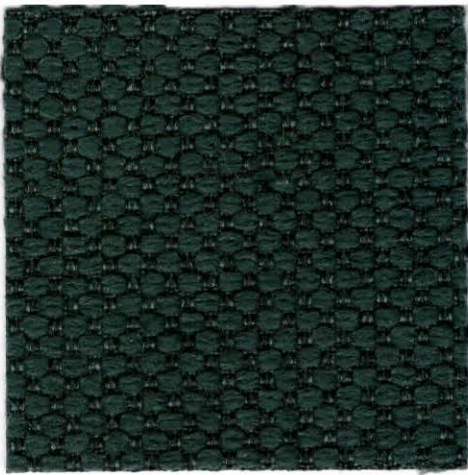


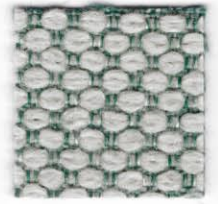
Merit



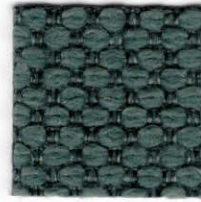
019



020



021



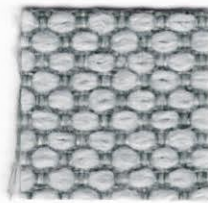
017



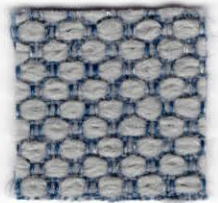
018



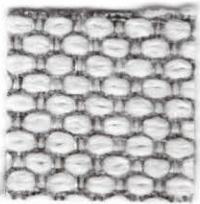
003



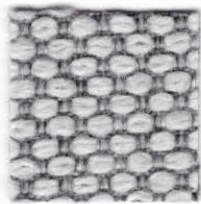
014



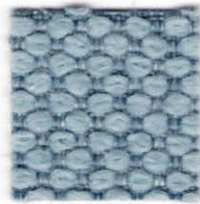
009



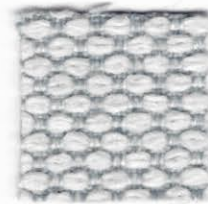
001



002



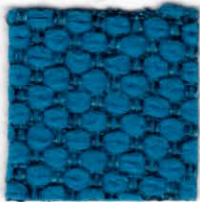
011



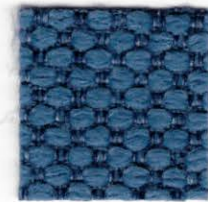
010



043



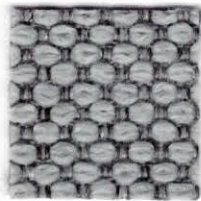
013



008



012



016



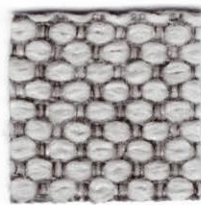
015



006



004



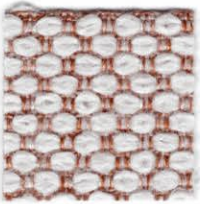
023



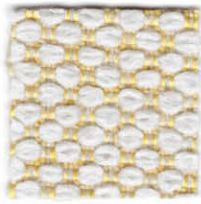
005



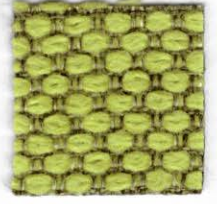
007



036



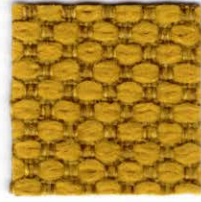
024



022



031



025



026



032



035



027



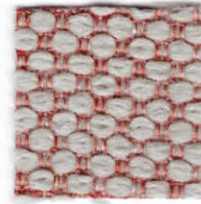
033



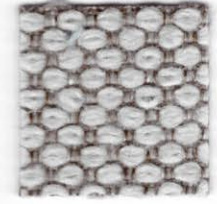
029



039



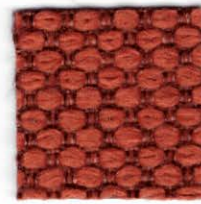
034



042



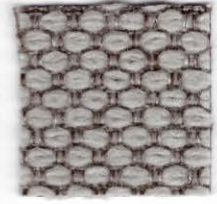
038



037



030



028



040



041

Merit by Maharam

Design: Maharam Design Studio

Anvendelse Kontorer, hoteller, institutioner, private indretninger. Stor slidstyrke.

Beskrivelse 76% post-consumer recycled polyester, 24% polyester. Smudsafvisende (PFOA fri). Bredde ca. 137 cm, Vægt ca. 500 g/lbm. Garnfarvet. Nuanceforskel kan forekomme.

Ægkant ↔

Slidstyrke: Ca. 85.000 slidbevægelser efter Martindale metoden EN ISO 12947. Ca. 100.000 double rubs i henhold til

Wyzenbeek metoden. **Lysægthed** (ISO) 6-7.

Pilling (EN ISO) 4. **Gnidægthed** (ISO) tør 4-5, våd 4-5. **Flammesikring:** BS 5852 Crib 5 med flammesikring. BS 5852 part 1 med flammesikring. EN 1021-1/2. US Cal. Bull. 117-2013. (Kopi af testrapport kan rekvireres).

Vedligeholdelse Se ISO symboler. Krypning ca. 2% ved vask 60°C.

Application Offices, hotels, institutions, domestic use. Great durability.

Description 76% post-consumer recycled polyester, 24% polyester. Stain resistant (PFOA free). Width app. 54 inches (137 cm). Weight app. 500 g/lin.m. Yarn dyed. Colour differences may occur.

Selvedge ↔

Abrasion: App. 85,000 rubs acc. to the Martindale method EN ISO 12947. App. 100.000 double rubs acc. to Wyzenbeek method. **Lightfastness** (ISO) 6-7. **Pilling** (EN ISO) 4. **Fastness to rubbing** (ISO) dry 4-5, wet 4-5. **Flame resistance:** BS 5852 Crib 5 with treatment. BS 5852 part 1 with treatment. EN 1021-1/2. US Cal. Bull. 117-2013. (Copy of test report available).

Care Please see the ISO symbols. Shrinkage app. 2% when washed at 60°C.

Anwendungsbereich Büros, Hotels, Objektbereich, privater Wohnbereich. Hohe Strapazierfähigkeit.

Beschreibung 76% post-consumer recycled Polyester, 24% Polyester. Schmutzabweizend (PFOA frei). Breite ca. 137 cm. Gewicht ca. 500 g/lfd.m. Garngefärbt. Farbunterschiede können vorkommen.

Webkant ↔

Scheuerfestigkeit: Ca. 85.000 Scheuerhübe gemäss der Martindale Methode EN ISO 12947. Ca. 100.000 double rubs gemäss der Wyzenbeek Methode. **Lichtechtheit** (ISO) 6-7. **Pilling** (EN ISO) 4. **Reibechtheit** (ISO) trocken 4-5, nass 4-5. **Flammschutz:** BS 5852 Crib 5 mit FR Ausrüstung. BS 5852 part 1 mit FR Ausrüstung. EN 1021-1/2. US Cal. Bull. 117-2013. (Kopie von Prüfungsbericht verfügbar).

Pflege Siehe ISO Pflegesymbole. Wascheinlauf ca. 2% bei 60°C.

Toepassing Kantoren, hotels, instellingen, de privé sfeer. Uitstekende slijtvastheid.

Omschrijving 76% post-consumer recycled polyester, 24% polyester. Vuilafstotend (PFOA free). Breedte ca. 137 cm. Gewicht ca. 500 g/str. m. Garegeverfd. Kleurverschillen kunnen optreden.

Zelfkant ↔

Slijtvastheid: Ca. 85.000 toeren Martindale EN ISO 12947. Ca. 100.000 double rubs

Wyzenbeek. **Lichtechtheid** (ISO) 6-7. **Pilling** (EN ISO) 4. **Wrijftechtheid** (ISO) droge 4-5, natte 4-5. **Brandvrijheid:** BS 5852 Crib 5 met FR behandeling. BS 5852 part 1 met FR behandeling. EN 1021-1/2. US Cal. Bull. 117-2013. (Op aanvraag sturen wij U graag een kopie van het testrapport toe).

Onderhoud Zie de ISO symbolen. Krimp ca. 2% bij 60°C.

Domaine d'utilisation Tissu d'ameublement pour aménagement privé et public. Grande résistance.

Description 76% post-consumer polyester recyclé, 24% polyester. Antitache (PFOA free). Largeur env. 137 cm. Poids env. 500 g/m lg. Teinture sur fil. Ecart des coloris possibles.

Lisière ↔

Résistance à l'abrasion: Env. 85.000 révolutions selon le procédé Martindale EN ISO 12947. Env. 100.000 double rubs selon le procédé Wyzenbeek. **Résistance à la lumière** (ISO) 6-7. **Boulochage** (EN ISO) 4. **Résistance au frottement** (ISO) sec 4-5, mouillé 4-5.

Normes au feu: BS 5852 Crib 5 avec traitement. BS 5852 part 1 avec traitement. EN 1021-1/2. US Cal. Bull. 117-2013. (La copie du compte rendu des tests est disponible sur demande).

Entretien Voir les symboles ISO.

Rétrécissement: Env. 2% pour lavage à 60°C.

Destinazione d'uso Rivestimento per imbottiti casa e contract. Alta resistenza all'abrasione.

Carratteristiche 76% post-consumer poliesteri riciclati, 24% poliesteri. Resiste alla macchie (PFOA free). Altezza circa 137 cm. Peso circa 500 gr/mtl. Tinto in filo. Possibili differenze per colore.

Cimosa ↔

Resistenza all'abrasione: circa 85.000 cicli/metodo Martindale EN ISO 12947. Circa 100.000 double rubs/metodo Wyzenbeek. **Resistenza alla luce** (ISO) 6-7. **Pilling** (EN ISO) 4. **Resistenza allo sfregamento** (ISO) condizione a secco 4-5, condizione umido 4-5. **Ignifugazione:** BS 5852 Crib 5 trattato ignifugo. BS 5852 part 1 trattato ignifugo. EN 1021-1/2. US Cal. Bull. 117-2013. (Disponibile copia del test).

Manutenzione Per favore seguire simboli ISO. Restrigimento 2% quando lavata 60°C.

Aplicación Oficinas, hoteles, instituciones, uso doméstico. Gran resistencia al desgaste.

Descripción 76% post-consumer poliéster reciclado, 24% poliéster. Tratamiento antimancha (libre de PFOA). Anchura aprox. 137 cm. Peso aprox. 500 gr/ml. Teñido al hilo. Posibles variaciones de tintadas.

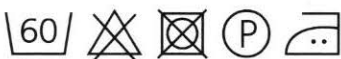
Filo ↔

Resistencia al desgaste: Aprox. 85.000 ciclos según el método Martindale EN ISO 12947.

Aprox. 100.000 double rubs según el método Wyzenbeek. **Estabilidad del color a la luz** (ISO) 6-7. **Relleno** (EN ISO) 4. **Solidez al frotamiento** (ISO) seco 4-5, mojado 4-5.

Resistencia al fuego: BS 5852 Crib 5 con tratamiento. BS 5852 part 1 con tratamiento. EN 1021-1/2. US Cal. Bull. 117-2013. (Copia del informe de ensayos disponible).

Mantenimiento Consulte los símbolos ISO. Encogimiento aprox. un 2% en lavado a 60°C.



3 year warranty – See Terms & Conditions www.maharam.com

Contact and further information www.kvadrat.dk

Quality and environmental system accreditation according to ISO 9001 and ISO 14001

spHaus design INC